



HOUGHTON HERITAGE SOCIETY

DIAMOND JUBILEE WOODS PROJECT

~ WILDLIFE GARDEN AT BURNSIDE PRIMARY SCHOOL ~



CORNER

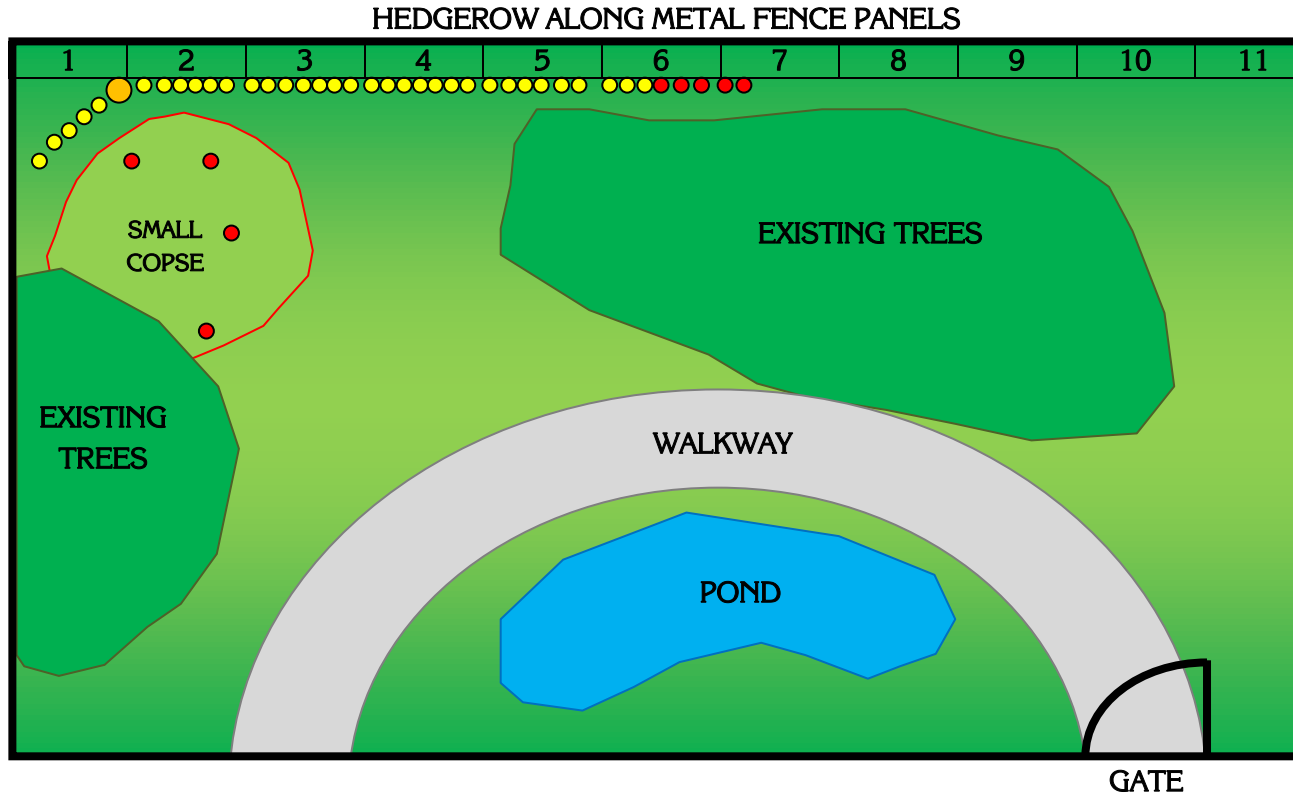
Beech x 6 Oak x 1

PANEL	NAME
1	I. MORRIS S. DOHERTY I. ROBINSON J. BAILEY B. SMITH P. LANAGAN + CAT REMAINS

SMALL COPSE

Beech x c30

NAME
P. LANAGAN J. LAMBTON G. GRIEVE



HEDGEROW

Hawthorn x 29 Beech x 5

PANEL	NAME
2	M. HUSBAND J. PARKIN G. PAIGE K. HUSBAND M. WARcup R. AVERY
3	S. TAYLOR M. NEWSOME M. GARDENER R. BENROSE J. WEARS L. SIMPSON E. WHITTLE
4	J. LOWERY C. WELSH J. HOWELL G. WILKINSON B. BUCKINGHAM L. HODGSON A. TAYLOR
5	B. MURPHY S. SMITH B. WILKINSON B. MIDDLEMAS J. HEDLEY S. WOODWARD
6	D. FENWICK A. RICHARDSON E. ADAMSON D. DINNIGAN G. COLLEDGE A. COLLEDGE
7	E. VIPOND C. NEWTON



HOUGHTON HERITAGE SOCIETY

copyright © 2013
www.HOUGHTONLESPRING.ORG.UK
PROUD TO BE MEMBERS OF





HOUGHTON HERITAGE SOCIETY

DIAMOND JUBILEE WOODS PROJECT

~ WILDLIFE GARDEN AT BURNSIDE PRIMARY SCHOOL ~



Houghton-le-Spring Heritage Society teamed up with pupils from Burnside Primary School to plant trees as part of the Woodland Trust's Diamond Jubilee Woods project.

A hawthorn hedgerow was planted along the north fence of the school's wildlife garden, while oak and beech were planted nearby. The decomposed remains of a cat were found during the work and were delicately buried underneath an oak tree.

The children's names were recorded so that they can revisit and identify the tree that they planted as it grows.

April 2013



HOUGHTON HERITAGE SOCIETY

copyright © 2013
www.HOUGHTONLESPRING.ORG.UK
PROUD TO BE MEMBERS OF

